

Lisney



Fairhill
Ballymena

**FAIRHILL
SHOPPING
CENTRE**
Ballymena



KEY INFORMATION

4.2

million

SHOPPERS
PER ANNUM

150k

CATCHMENT
POPULATION

900

CAR PARKING
SPACES

**TOP
5**

N.I. RETAIL
LOCATION

**55
units**

INCLUDING FOOD
COURT

**295k
SQ FT**

ENCLOSED
SCHEME

**28
miles**

LOCATION NORTH
OF BELFAST

c.65k

BALLYMENA TOWN
POPULATION



THE LATEST BRANDS

THE NORTH EAST'S DOMINANT REGIONAL SHOPPING CENTRE



M&S 70,000 sq ft



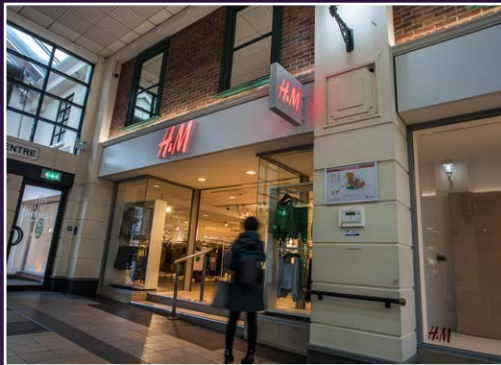
Next 23,500 sq ft



New Look 20,750 sq ft



River Island 7,604 sq ft



H&M 15,250 sq ft



Starbucks - 2,025 sq ft



The Works - 3,700 sq ft



Greggs - 2,700 sq ft

OUR BRANDS - OVER 50 RETAILERS

M&S
EST. 1884

DEBENHAMS

H&M

next

NEW LOOK

CAFFÈ
NERO

Specsavers

W
Waterstones

RIVER ISLAND

Boots

oasis

TOPMAN TOPSHOP

JD

GOLDSMITHS
SINCE 1778

BURGER
KING

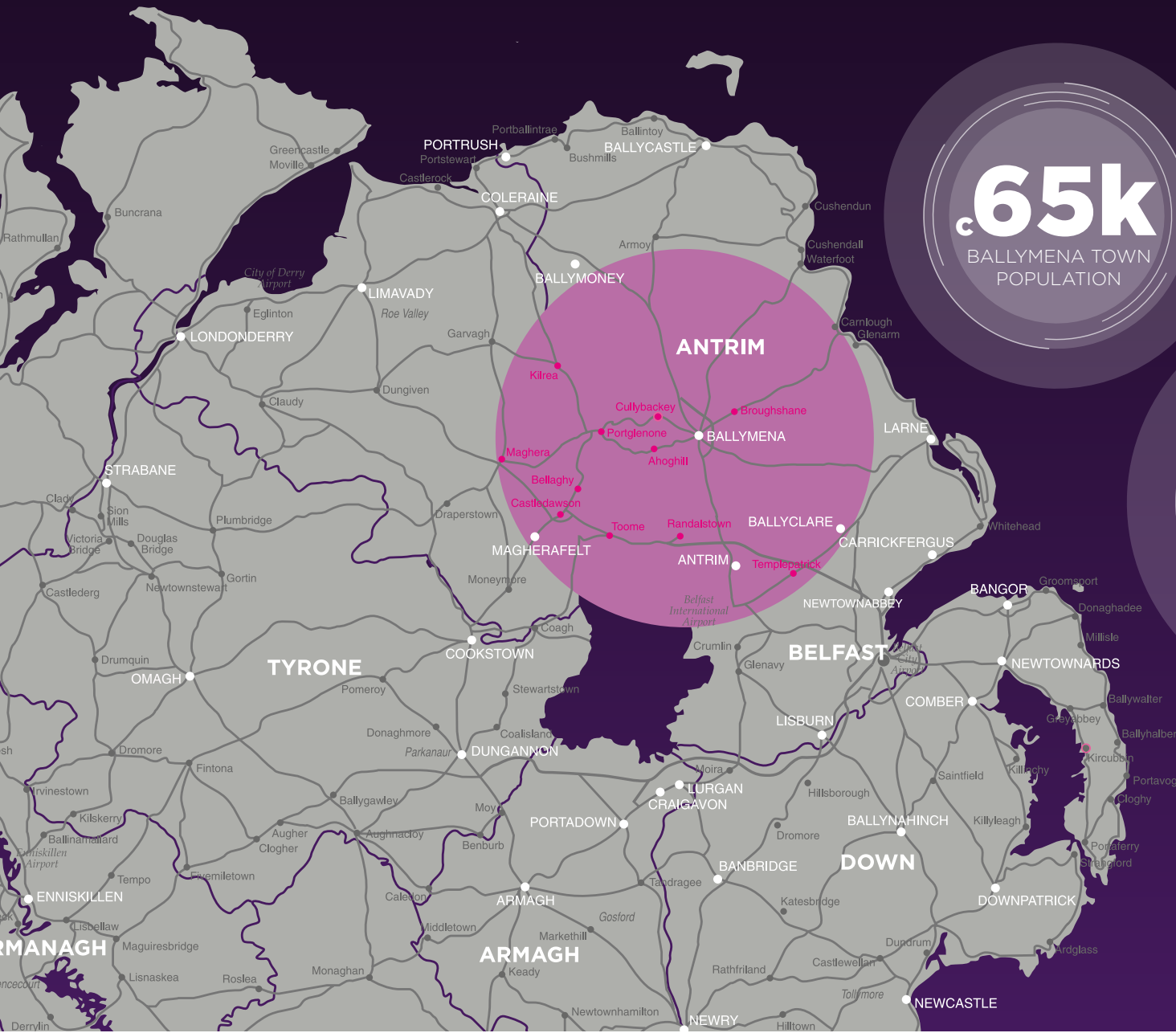
SUBWAY

Starbucks

Superdry
極度乾燥(しなさい)



KEY RESEARCH



65k
BALLYMENA TOWN
POPULATION

£23.28

Average spend per
person, per week
on food and
non-alcoholic
drink

£14.15

Average spend per
person, per week
Eating Out

150k
CATCHMENT
POPULATION

£7.14

Average spend per
person, per week
on Cosmetics &
Toiletries

£9.61

Average spend per
person, per week
on Womanswear
and footwear

£4.66

Average spend per
person, per week
on Tech



Contact

Nicky Finnieston
nfinnieston@lisney.com
07771988007

Jonathan Haughey
jhaughey@lisney.com
07718571498

Montgomery House,
29-33 Montgomery Street, Belfast BT1 4NX
T: 02890 501 501
E: belfast@lisney.com

Lisney